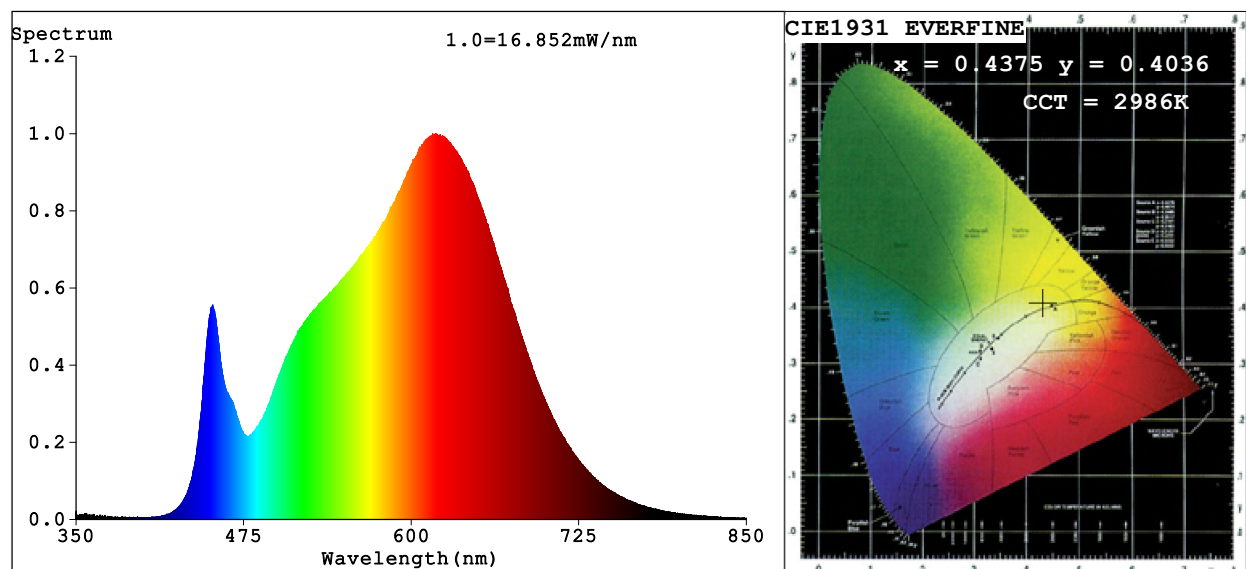


## Spectrum Test Report



### Color Parameters:

Chromaticity Coordinate:  $x=0.4375$   $y=0.4036$   $u'=0.2512$   $v'=0.5213$

$CCT=2986K$  ( $Duv=-0.0003$ ) Dominant WL:  $Ld = 583.0nm$  Purity=52.5%

Ratio: R=24.5% G=72.7% B=2.8%; Peak WL:  $Lp=618.4nm$  FWHM=162.4nm

Render Index:  $Ra=93.3$  CRI=90.5 TM30:  $Rf=91$   $Rg=100$

R1 =94 R2 =97 R3 =98 R4 =94 R5 =93 R6 =96 R7 =93

R8 =83 R9 =61 R10=91 R11=95 R12=80 R13=95 R14=98 R15=90

### Photo Parameters:

Flux = 829.3 lm Eff. : 44.30 lm/W  $Fe = 2.874 W$

### Electrical parameters:

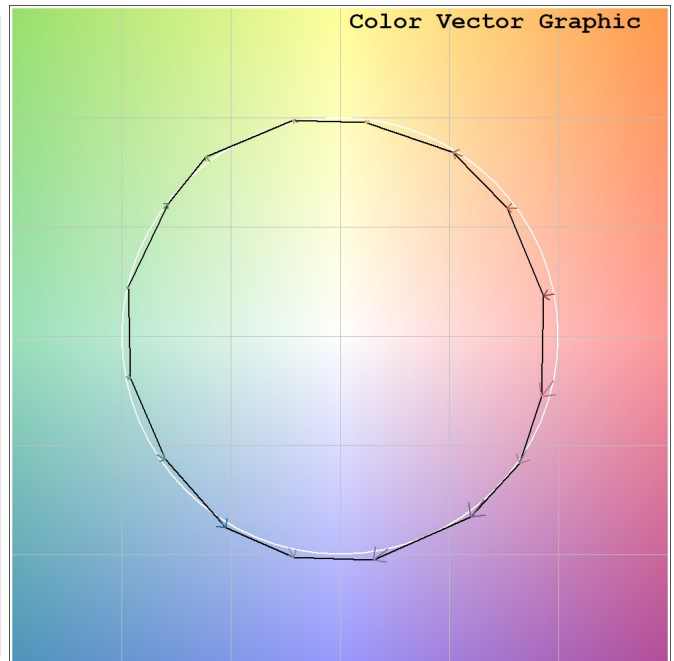
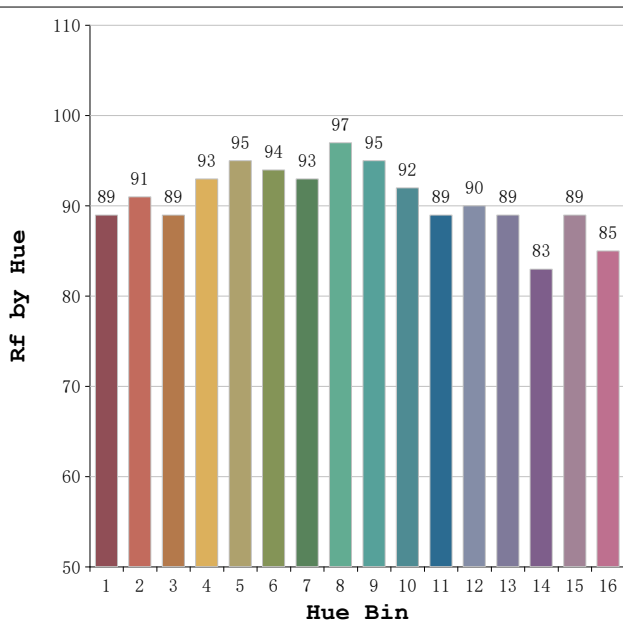
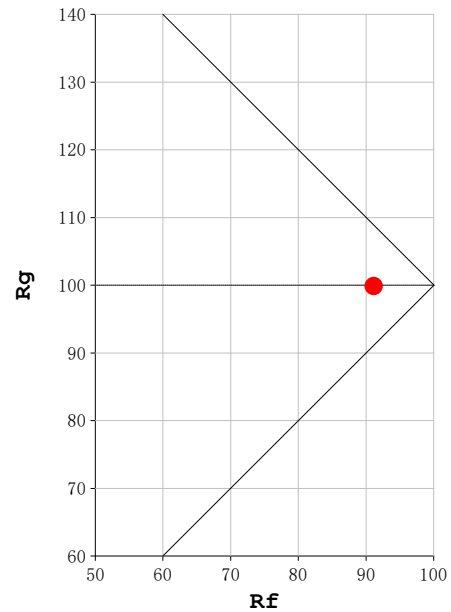
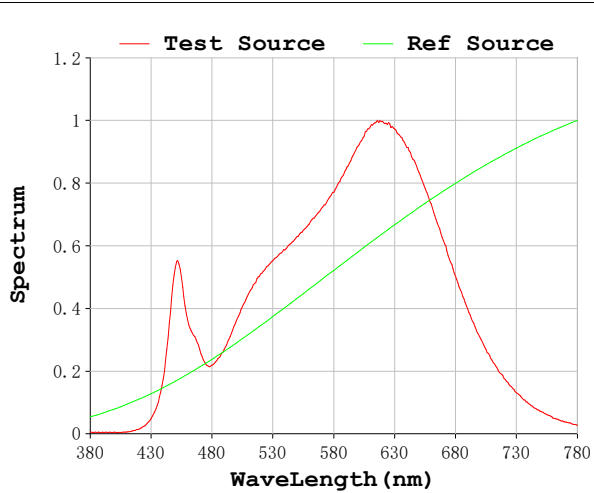
$V = 230.08 V$   $I = 0.09062 A$   $P = 18.72 W$  PF = 0.8978

Status: Integral T = 1562 ms  $I_p = 46374 (71\%)$

Model: Spotia Zomm CTT Negro  
 Tester: Sergio Carneros  
 Temperature: 20Deg  
 Manufacturer: Luz Negra

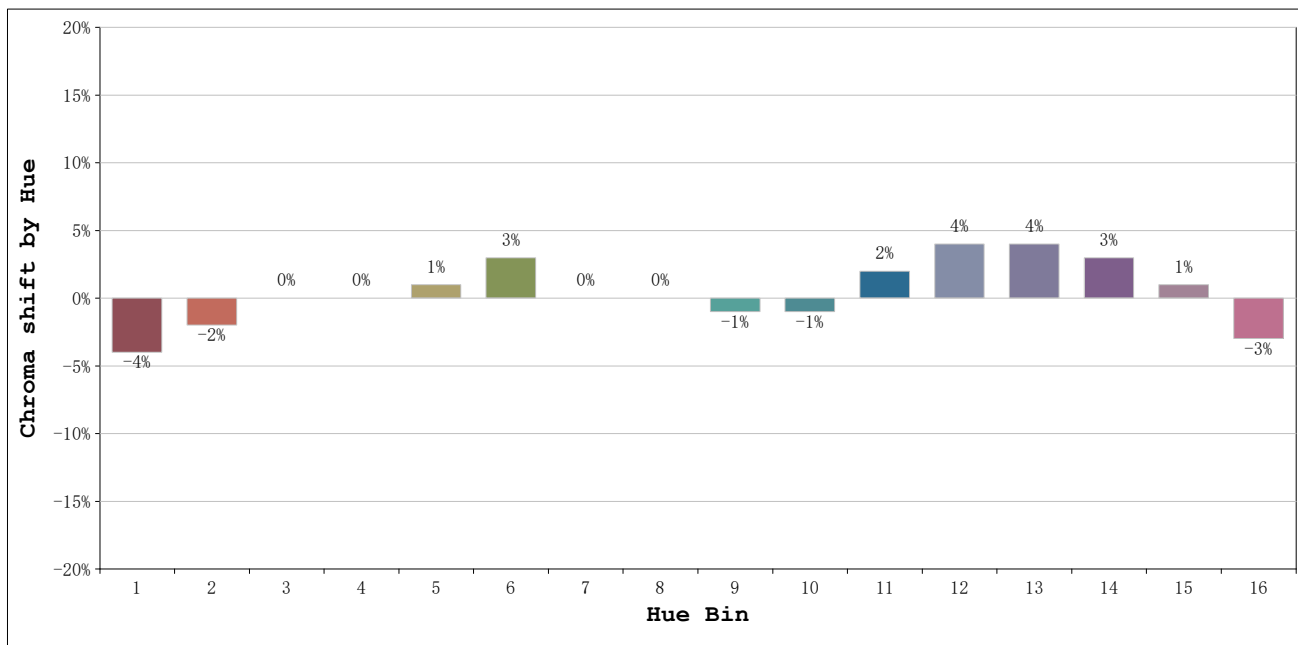
Number: 3000k 20° Panal de abeja  
 Date: 2026-03-23 09:02:42  
 Humidity: 50%  
 Remarks: 1 unidad

**Rf: 91**      **CCT: 2986 K**      **u': 0.2512**  
**Rg: 100**      **Duv: -0.0003**      **v': 0.5213**



Model:Spotia Zomm CTT Negro  
 Tester:Sergio Carneros  
 Temperature:20Deg  
 Manufacturer:Luz Negra

Number:3000k 20° Panal de abeja  
 Date:2026-03-23 09:02:42  
 Humidity:50%  
 Remarks:1 unidad

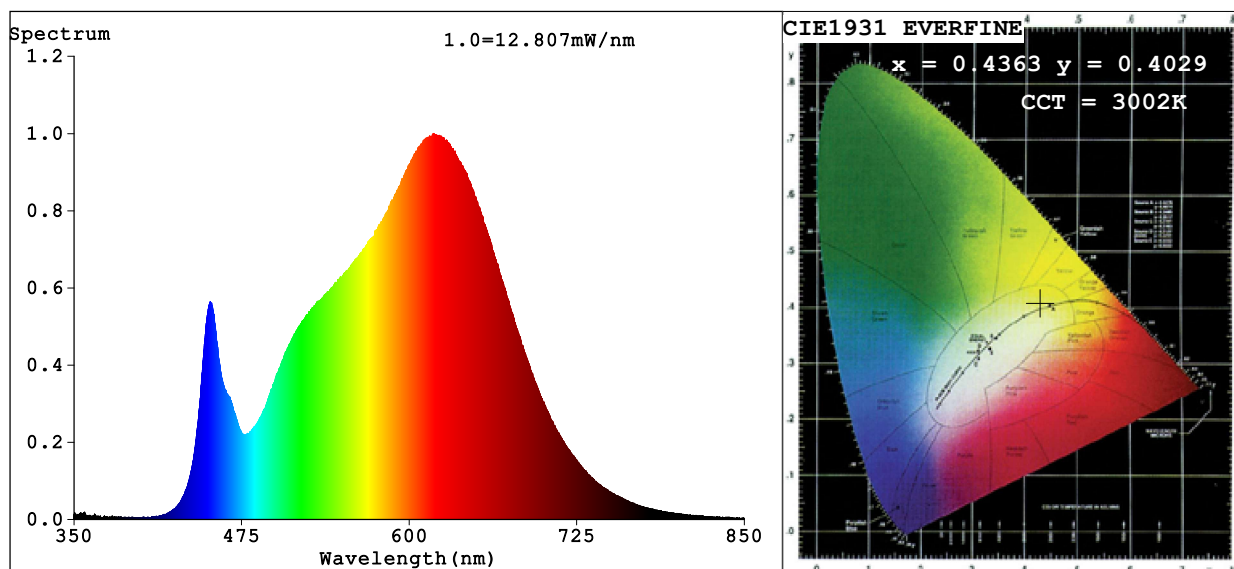


			Graphic shift(%)	
Hue Bin	Hue Angle	Rf	Chroma	Hue
1	0.0° - 22.5°	89	-4	0
2	22.5° - 45.0°	91	-2	3
3	45.0° - 67.5°	89	0	5
4	67.5° - 90.0°	93	0	2
5	90.0° - 112.5°	95	1	2
6	112.5° - 135.0°	94	3	0
7	135.0° - 157.5°	93	0	-2
8	157.5° - 180.0°	97	0	0
9	180.0° - 202.5°	95	-1	1
10	202.5° - 225.0°	92	-1	4
11	225.0° - 247.5°	89	2	6
12	247.5° - 270.0°	90	4	3
13	270.0° - 292.5°	89	4	-7
14	292.5° - 315.0°	83	3	-9
15	315.0° - 337.5°	89	1	-6
16	337.5° - 360.0°	85	-3	-7

Model:Spotia Zomm CTT Negro  
 Tester:Sergio Carneros  
 Temperature:20Deg  
 Manufacturer:Luz Negra

Number:3000k 20° Panal de abeja  
 Date:2026-03-23 09:02:42  
 Humidity:50%  
 Remarks:1 unidad

## Spectrum Test Report



### Color Parameters:

Chromaticity Coordinate:  $x=0.4363$   $y=0.4029$   $u'=0.2506$   $v'=0.5208$   
 CCT=3002K (Duv=-0.0004) Dominant WL:Ld =582.9nm Purity=51.9%  
 Ratio:R=24.4% G=72.7% B=2.8%; Peak WL:Lp=618.4nm FWHM=162.2nm  
 Render Index:Ra=93.3 CRI=90.5 TM30:Rf=91 Rg=100  
 R1 =94 R2 =97 R3 =98 R4 =94 R5 =93 R6 =96 R7 =92  
 R8 =83 R9 =61 R10=91 R11=95 R12=80 R13=95 R14=98 R15=90

### Photo Parameters:

Flux = 632.5 lm Eff. : 33.90 lm/W Fe = 2.189 W

### Electrical parameters:

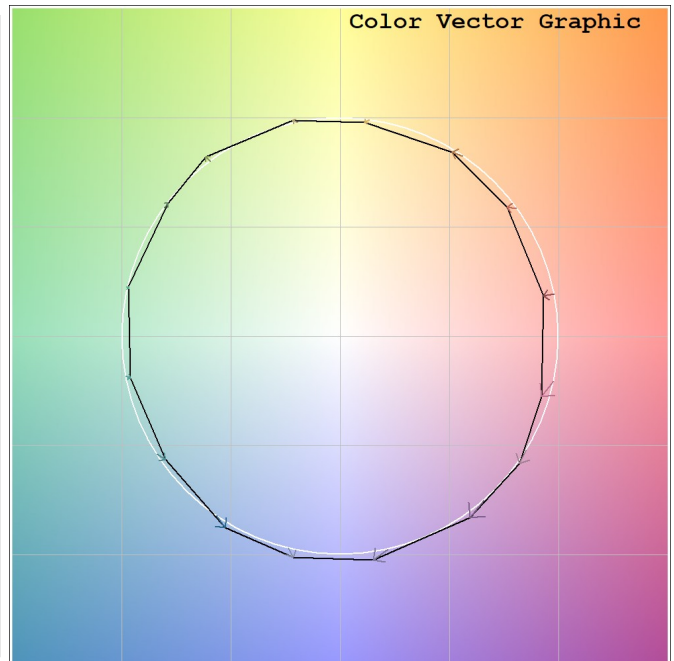
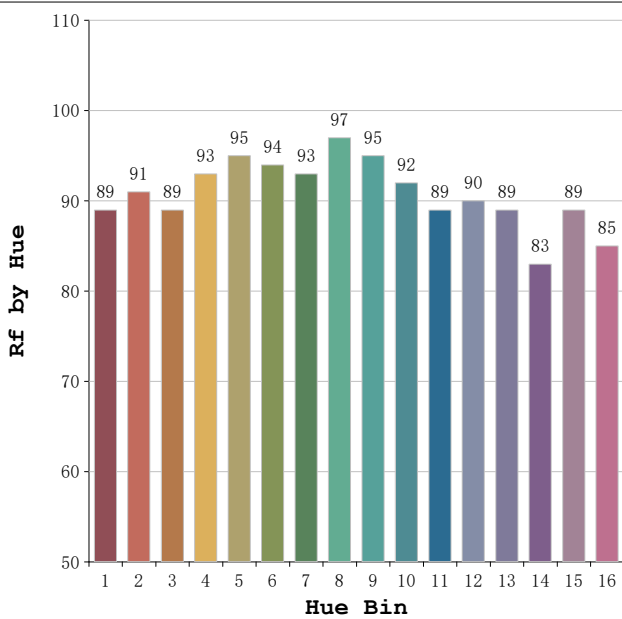
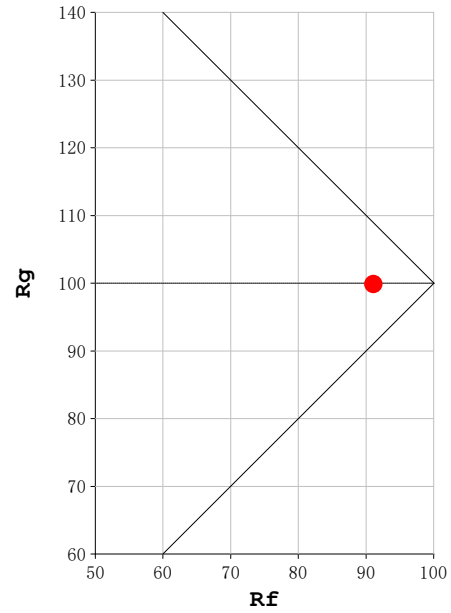
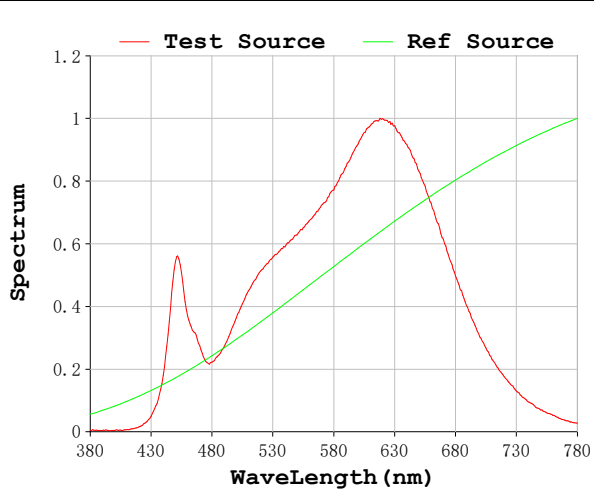
V = 230.08 V I = 0.09037 A P = 18.66 W PF = 0.8974

Status: Integral T = 1562 ms Ip = 35250 (54%)

Model:Spotia Zomm CTT Negro  
 Tester:Sergio Carneros  
 Temperature:20Deg  
 Manufacturer:Luz Negra

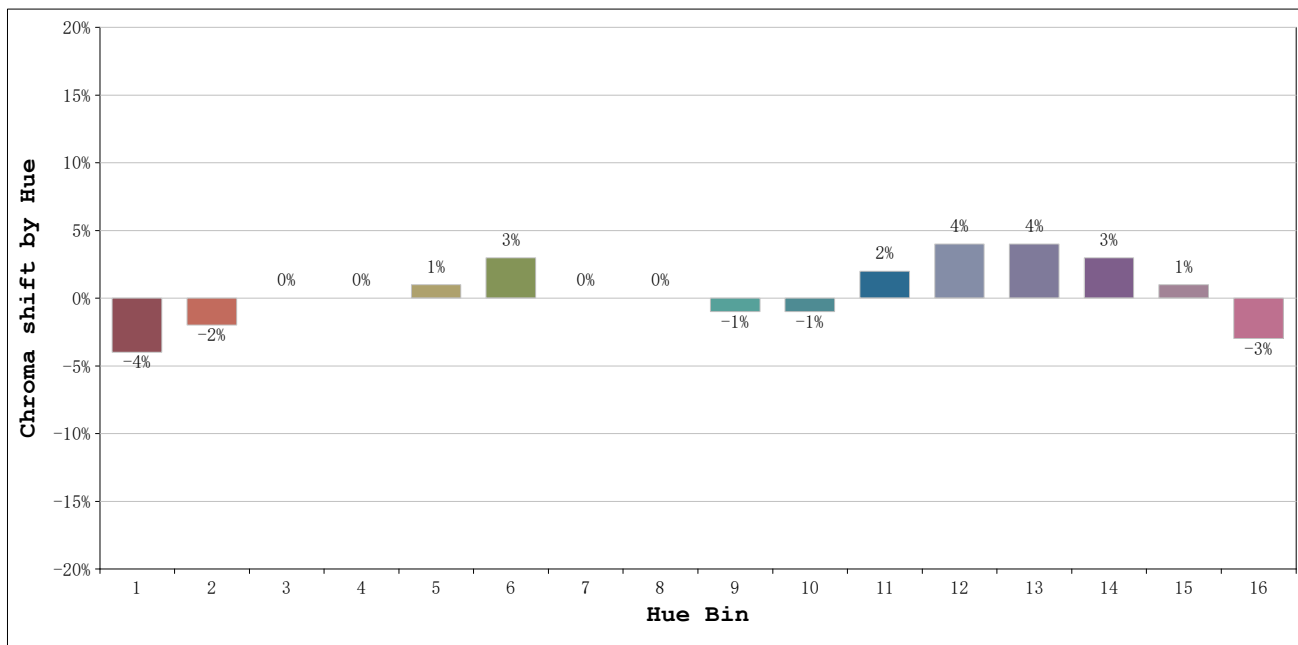
Number:3000k 60° Panal de abeja  
 Date:2026-03-23 09:03:23  
 Humidity:50%  
 Remarks:1 unidad

**Rf: 91**      **CCT: 3002 K**      **u': 0.2506**  
**Rg: 100**      **Duv: -0.0004**      **v': 0.5208**



Model:Spotia Zomm CTT Negro  
 Tester:Sergio Carneros  
 Temperature:20Deg  
 Manufacturer:Luz Negra

Number:3000k 60° Panal de abeja  
 Date:2026-03-23 09:03:23  
 Humidity:50%  
 Remarks:1 unidad



			Graphic shift(%)	
Hue Bin	Hue Angle	Rf	Chroma	Hue
1	0.0° - 22.5°	89	-4	0
2	22.5° - 45.0°	91	-2	3
3	45.0° - 67.5°	89	0	5
4	67.5° - 90.0°	93	0	2
5	90.0° - 112.5°	95	1	2
6	112.5° - 135.0°	94	3	0
7	135.0° - 157.5°	93	0	-2
8	157.5° - 180.0°	97	0	0
9	180.0° - 202.5°	95	-1	1
10	202.5° - 225.0°	92	-1	4
11	225.0° - 247.5°	89	2	6
12	247.5° - 270.0°	90	4	3
13	270.0° - 292.5°	89	4	-7
14	292.5° - 315.0°	83	3	-9
15	315.0° - 337.5°	89	1	-6
16	337.5° - 360.0°	85	-3	-7

Model:Spotia Zomm CTT Negro  
 Tester:Sergio Carneros  
 Temperature:20Deg  
 Manufacturer:Luz Negra

Number:3000k 60° Panal de abeja  
 Date:2026-03-23 09:03:23  
 Humidity:50%  
 Remarks:1 unidad